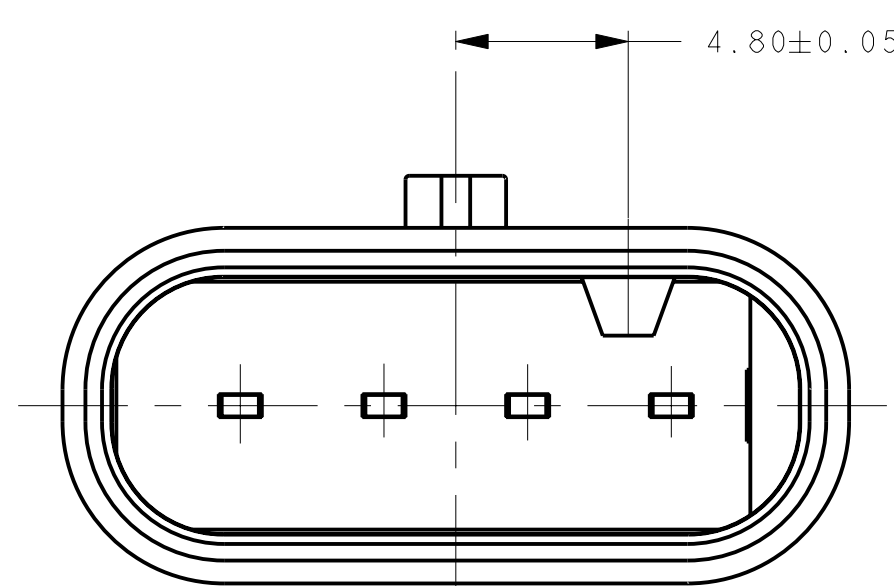
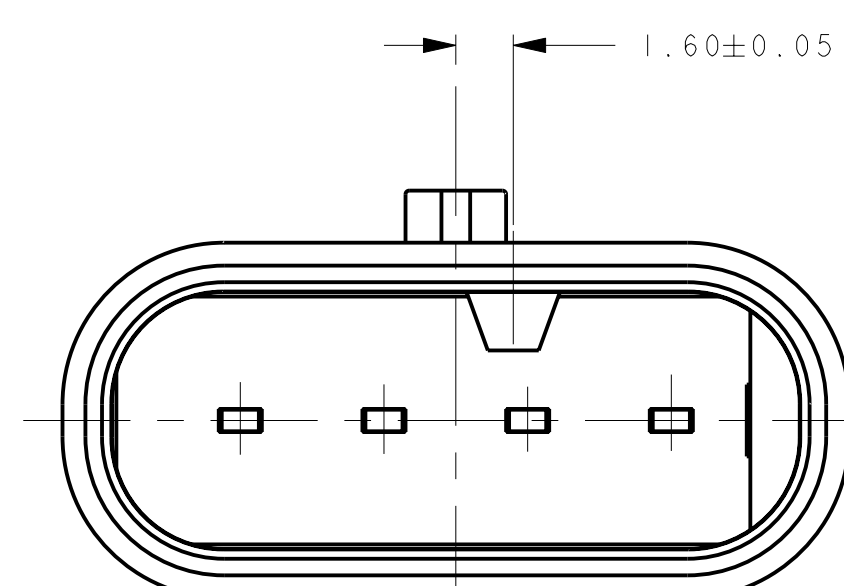


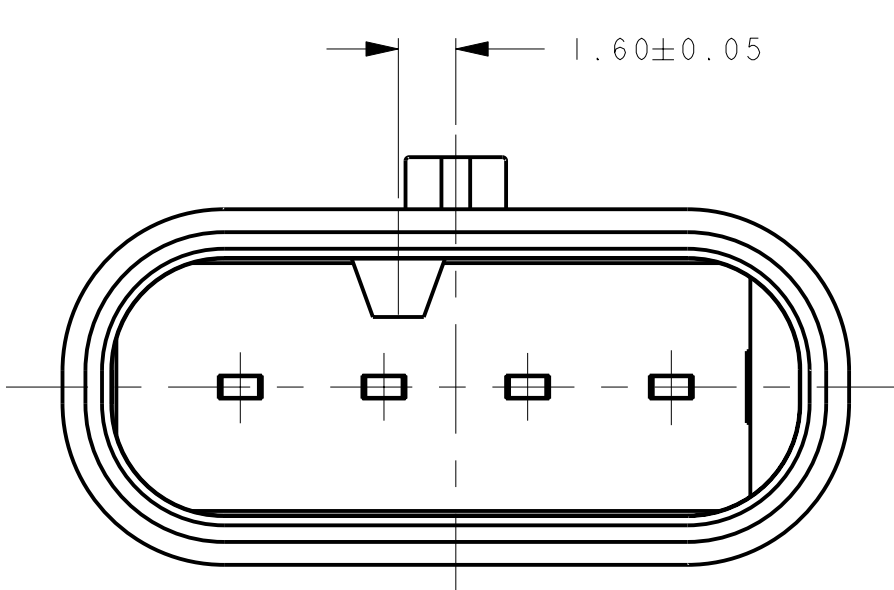
D



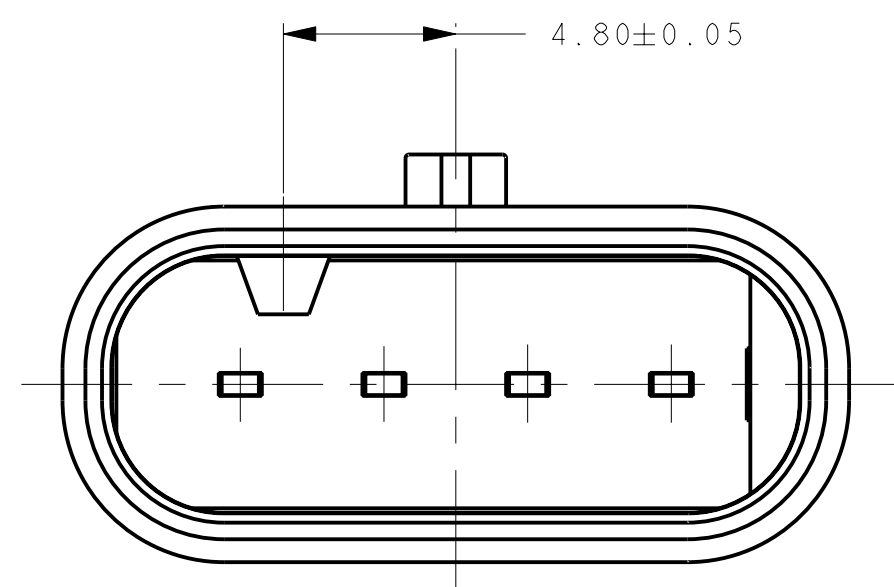
KEYING OPTION A



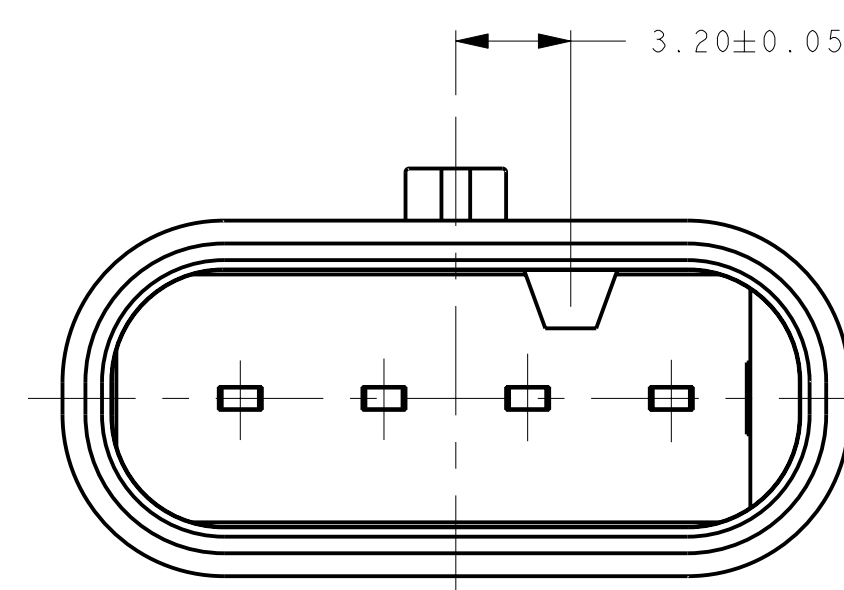
KEYING OPTION B



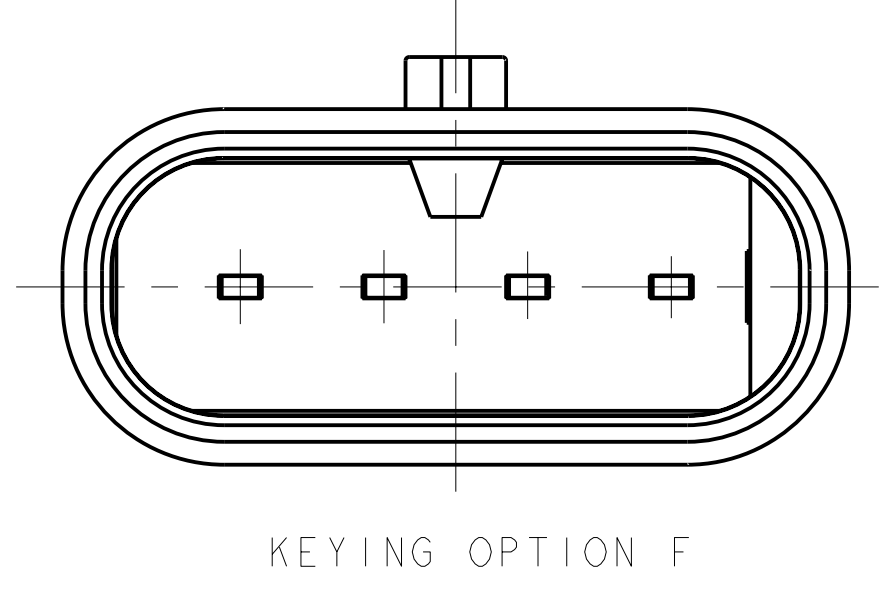
KEYING OPTION C



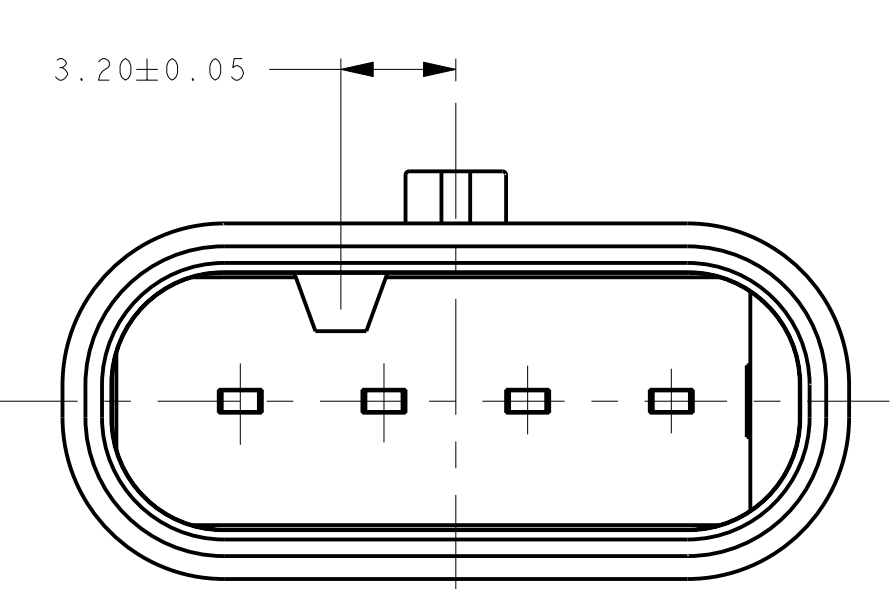
KEYING OPTION D



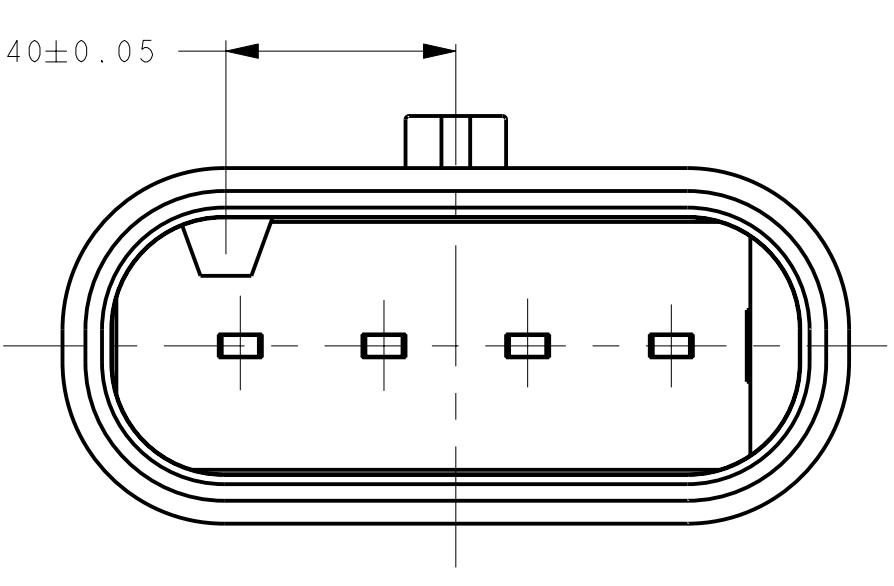
KEYING OPTION E



KEYING OPTION F



KEYING OPTION G

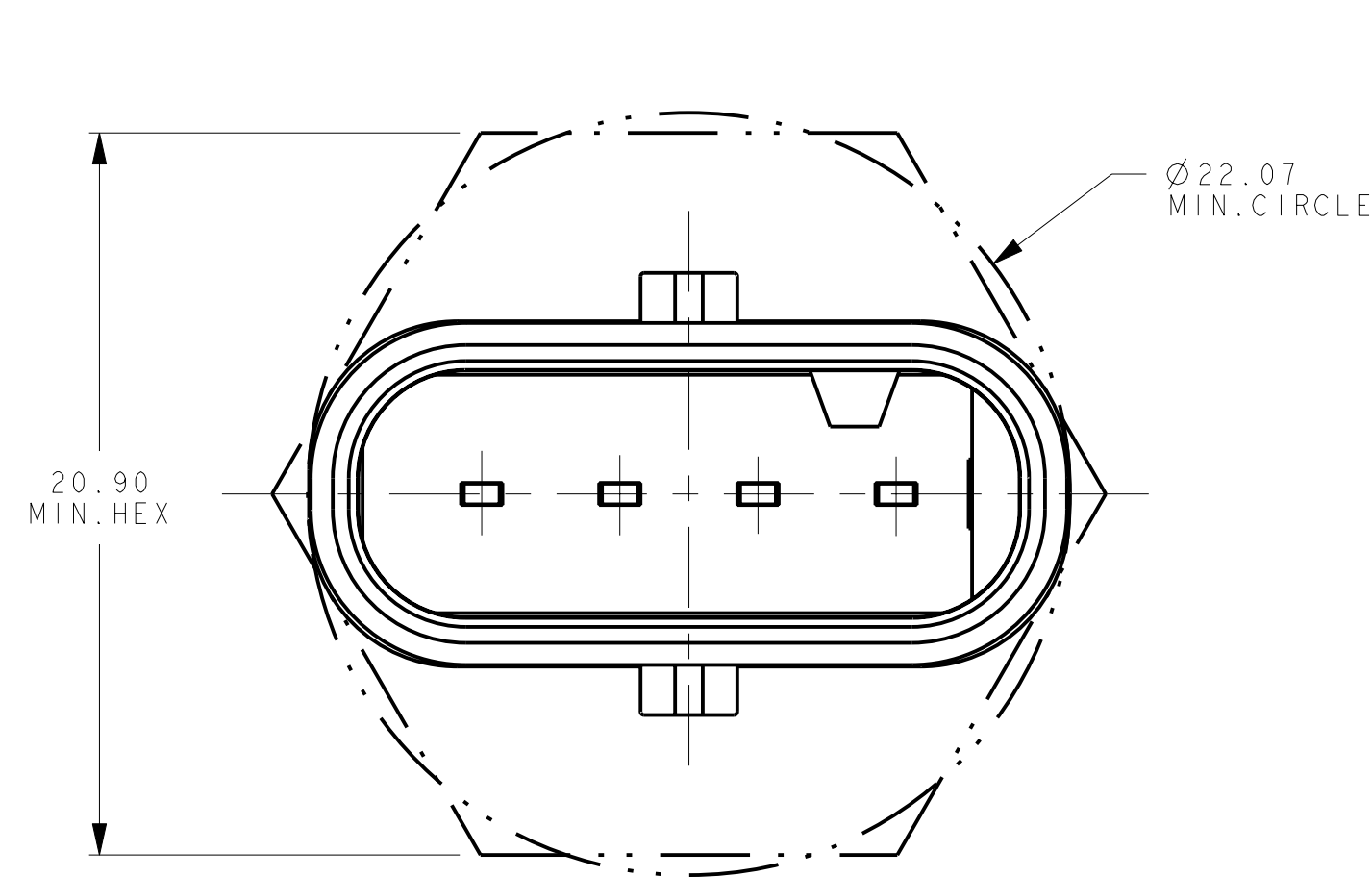


KEYING OPTION H

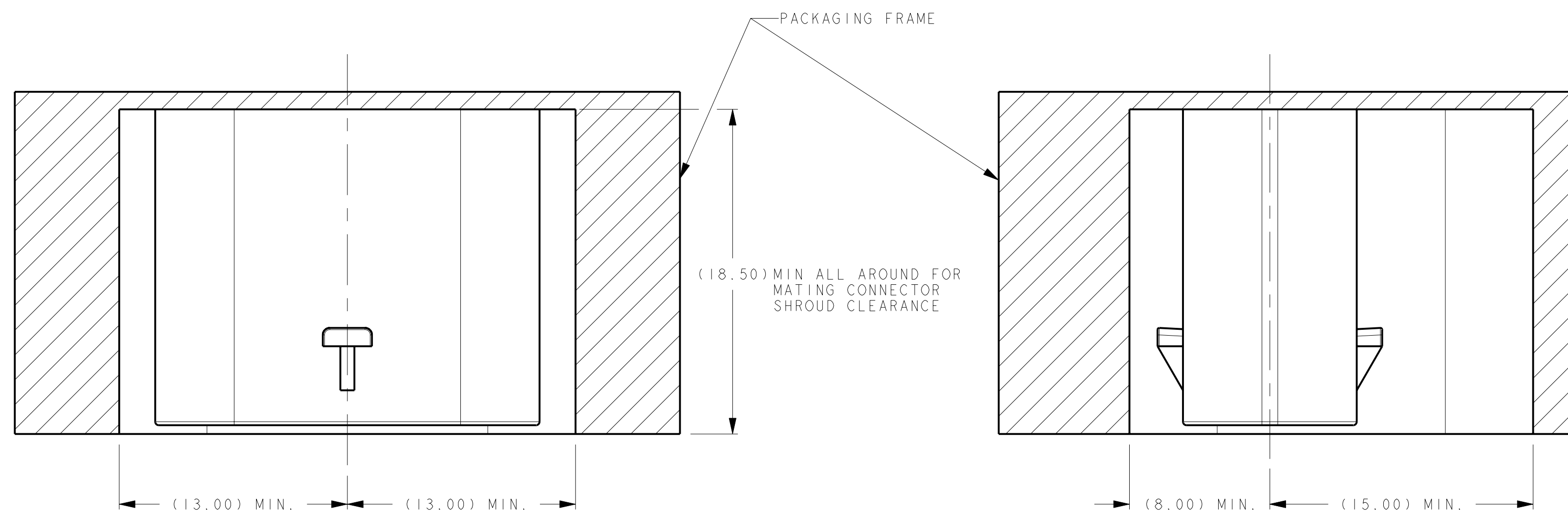
POLARIZATION VIEWS

A

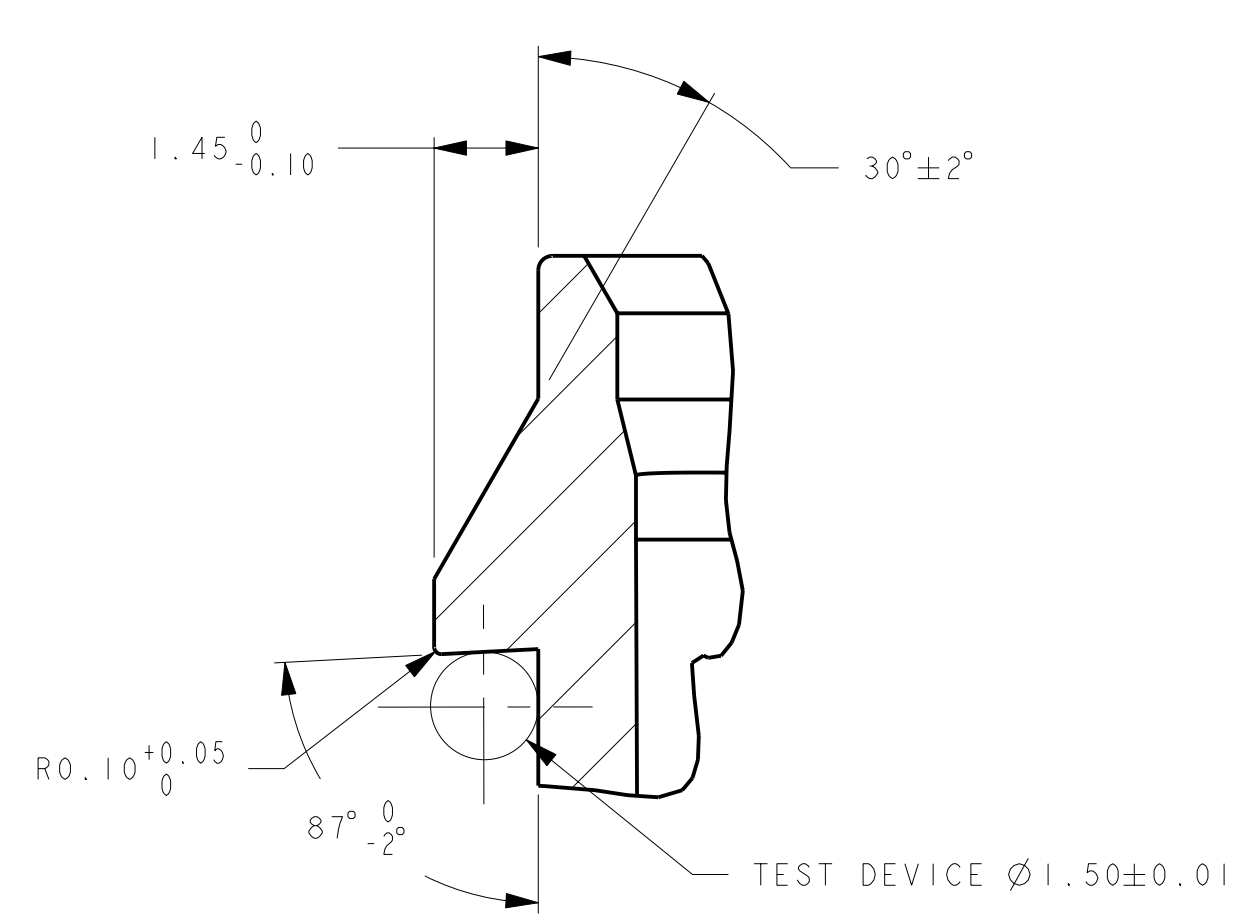
4



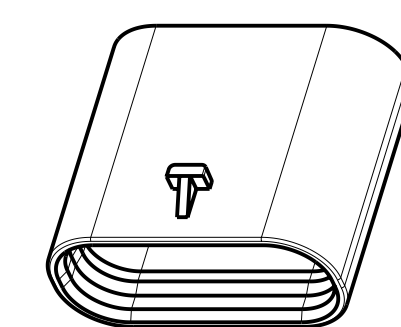
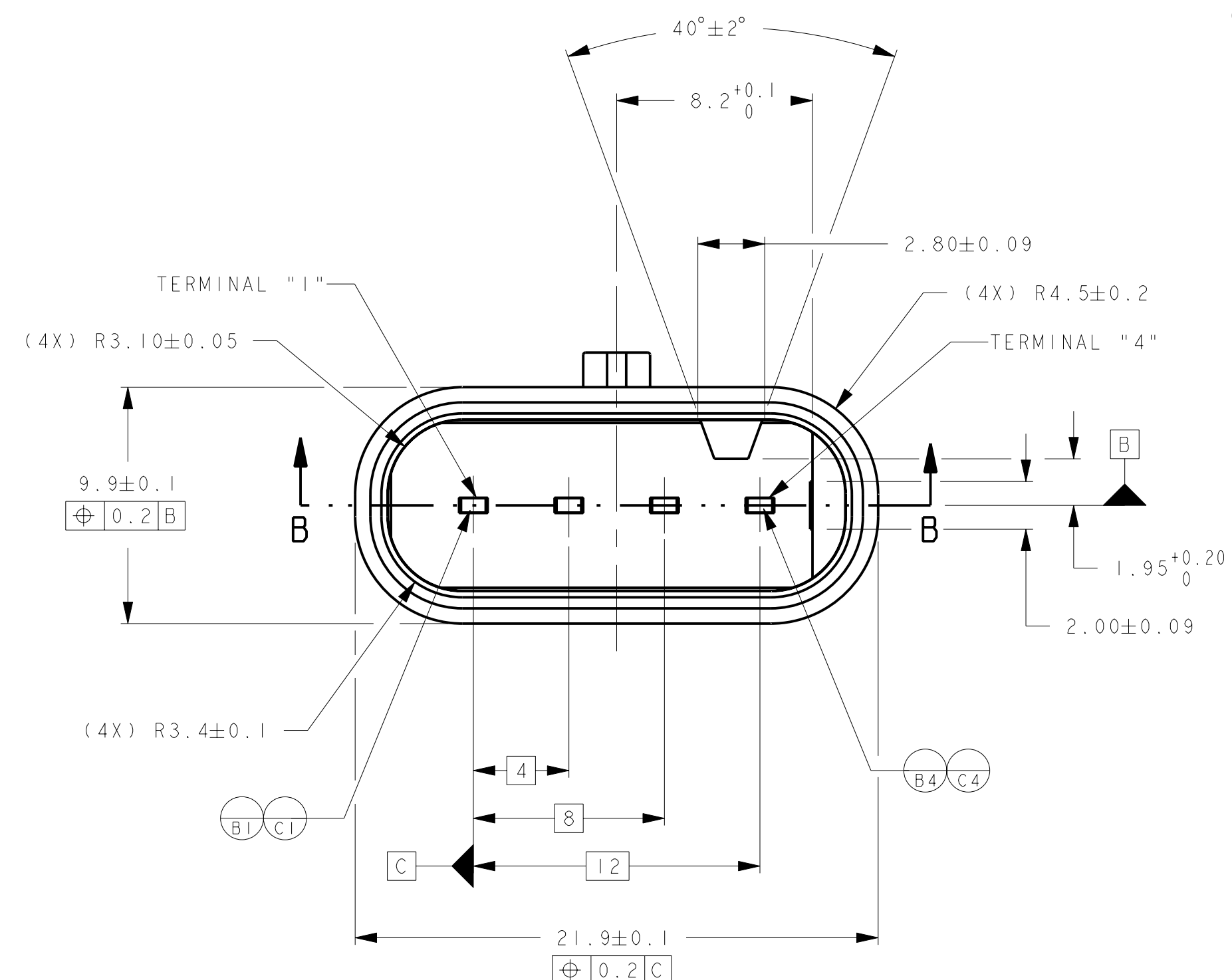
MINIMUM FIT SIZE
PROVIDED FOR INFORMATIONAL PURPOSES ONLY
(BASED ON MAXIMUM MATERIAL CONDITION)



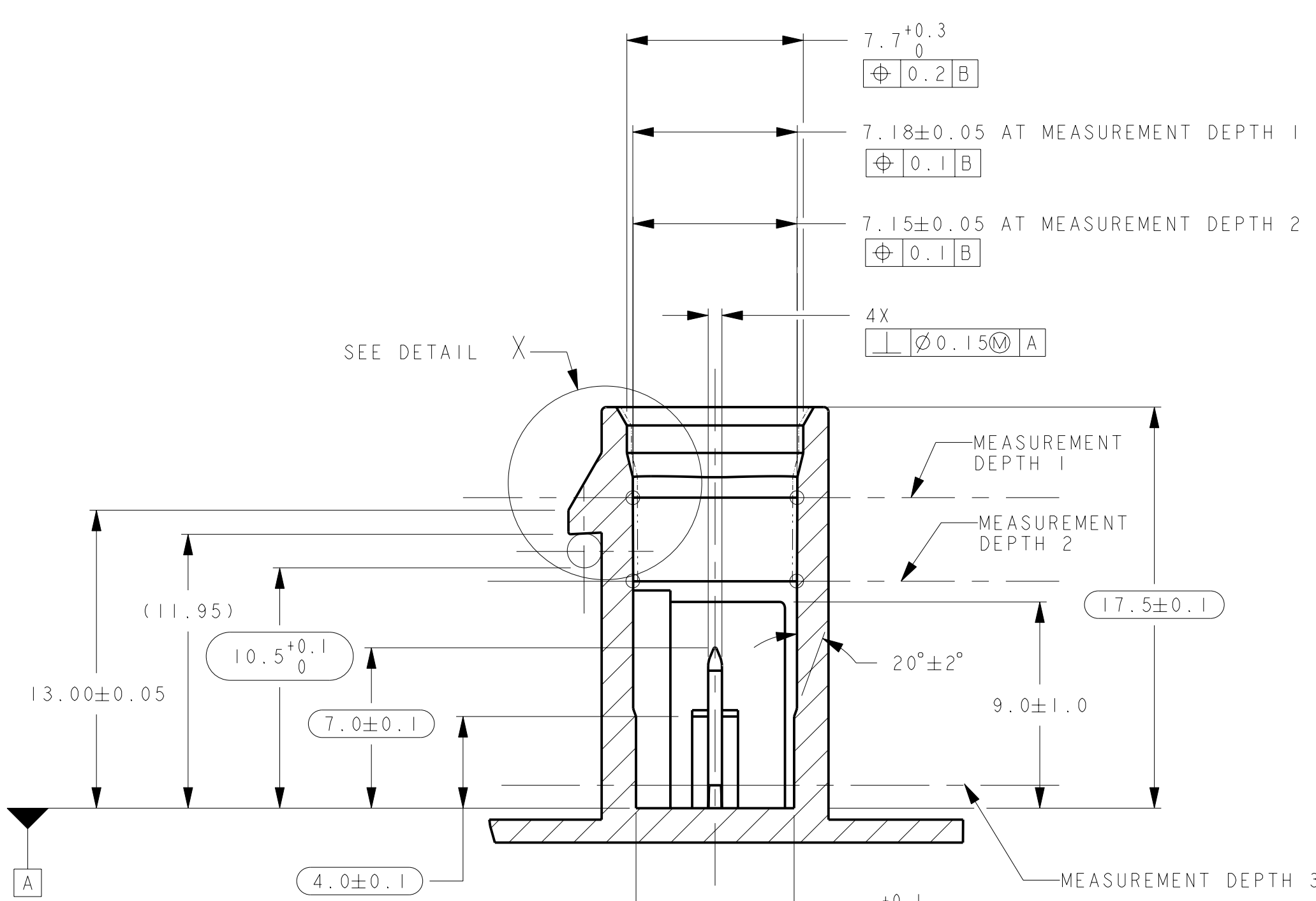
IF THE HEADER IS RECESSED INTO A POCKET, THESE DIMENSIONS REPRESENT
THE MINIMUM CLEARANCE REQUIRED FOR THE MATING CONNECTOR SHROUD



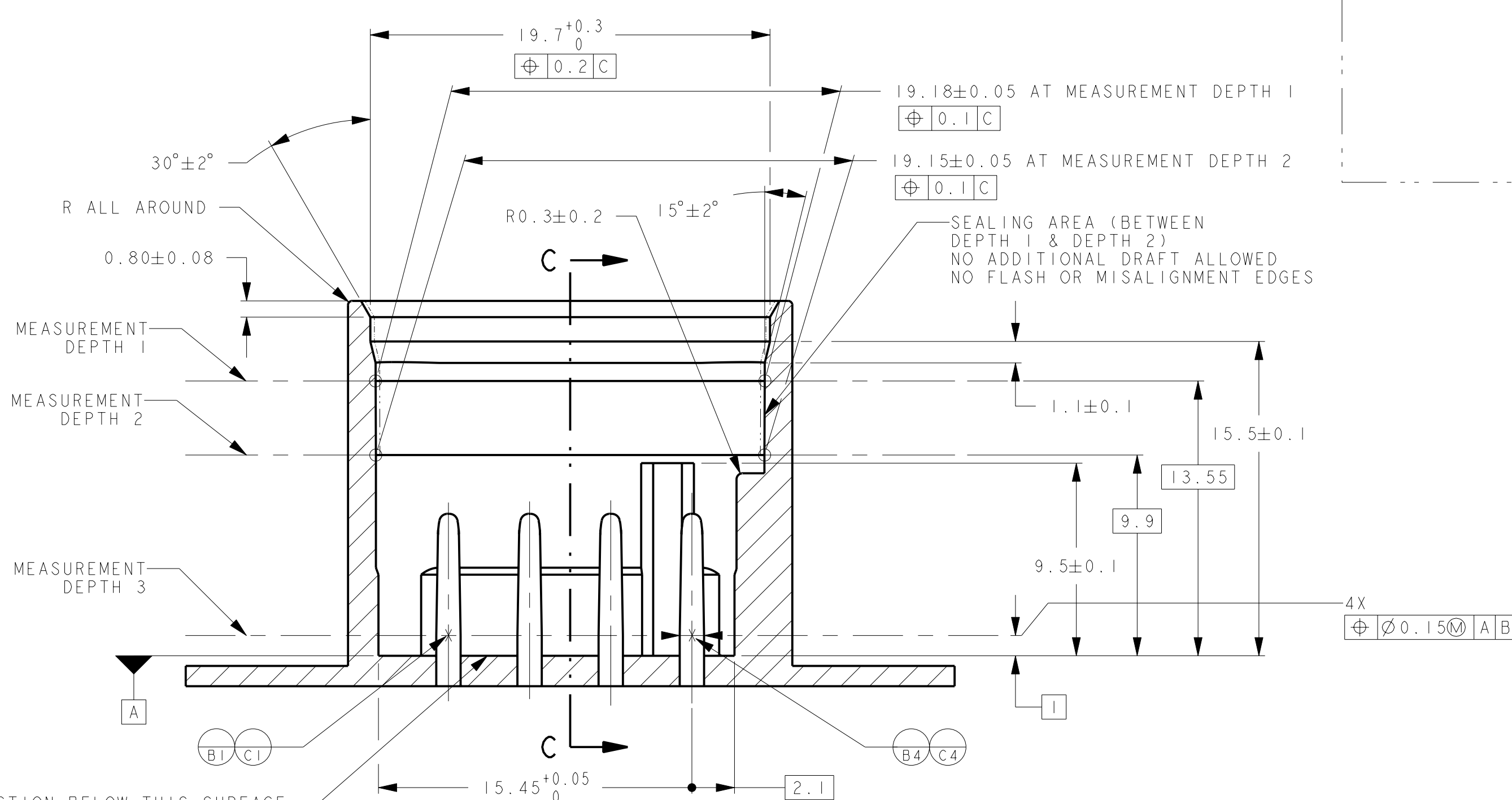
DETAIL X
SCALE 10:1



SCALE 2:1



SECTION C-C



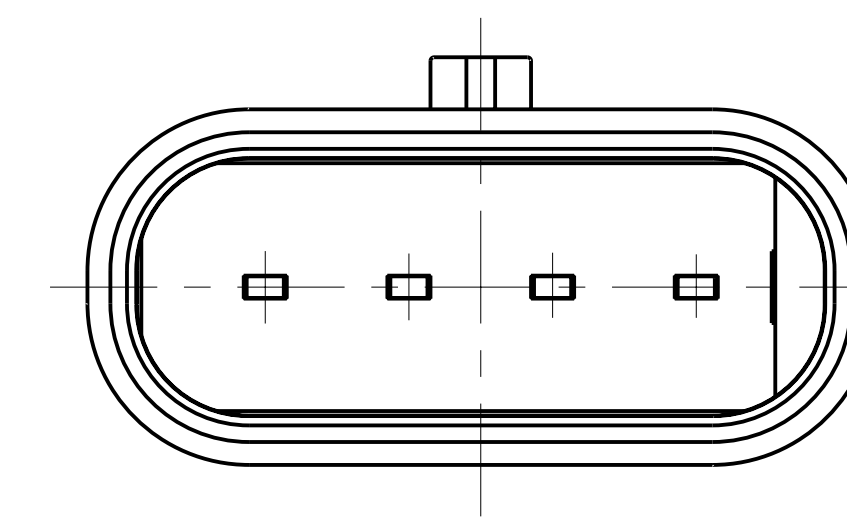
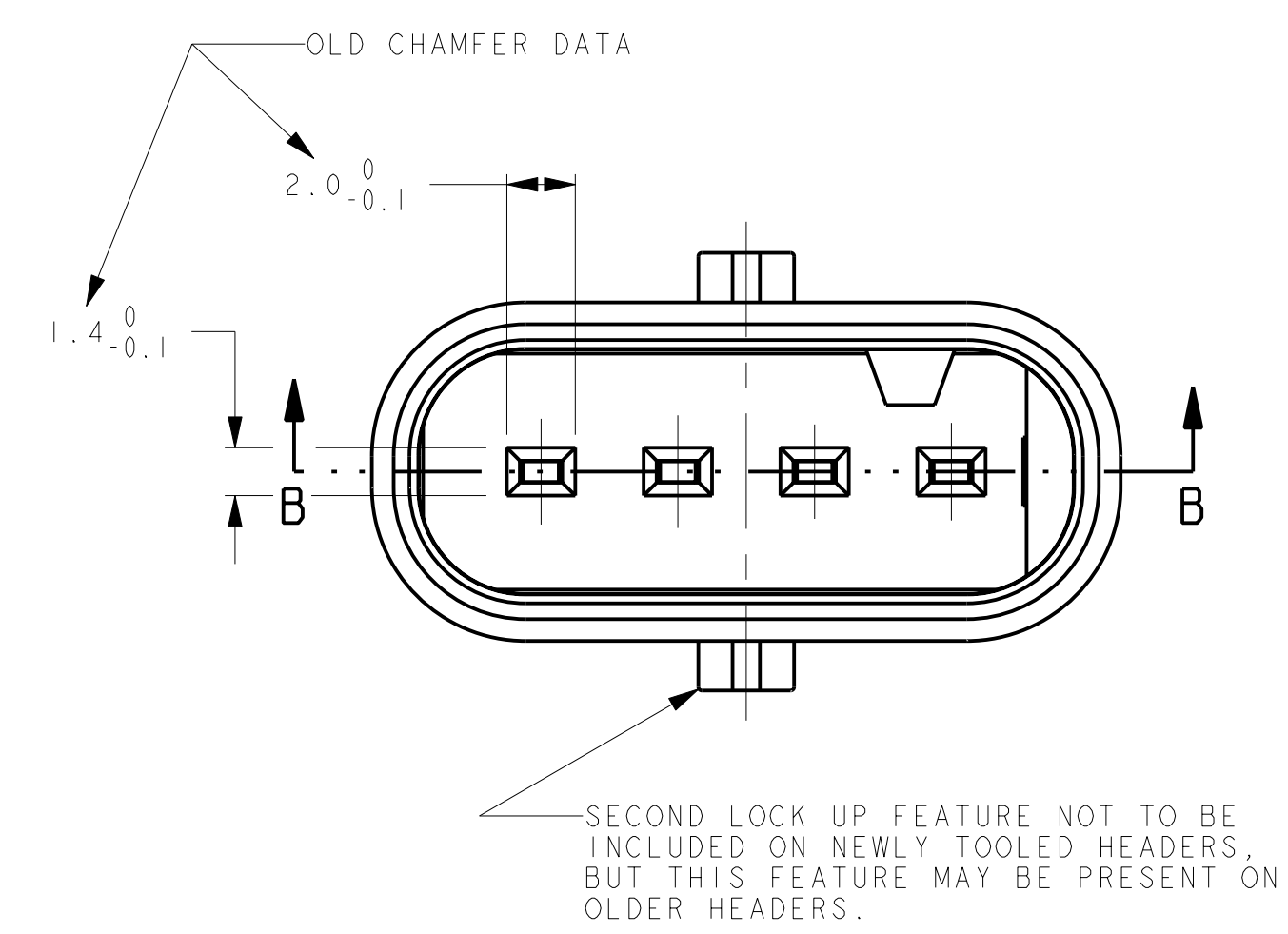
SECTION B-B

NOTES: UNLESS OTHERWISE SPECIFIED

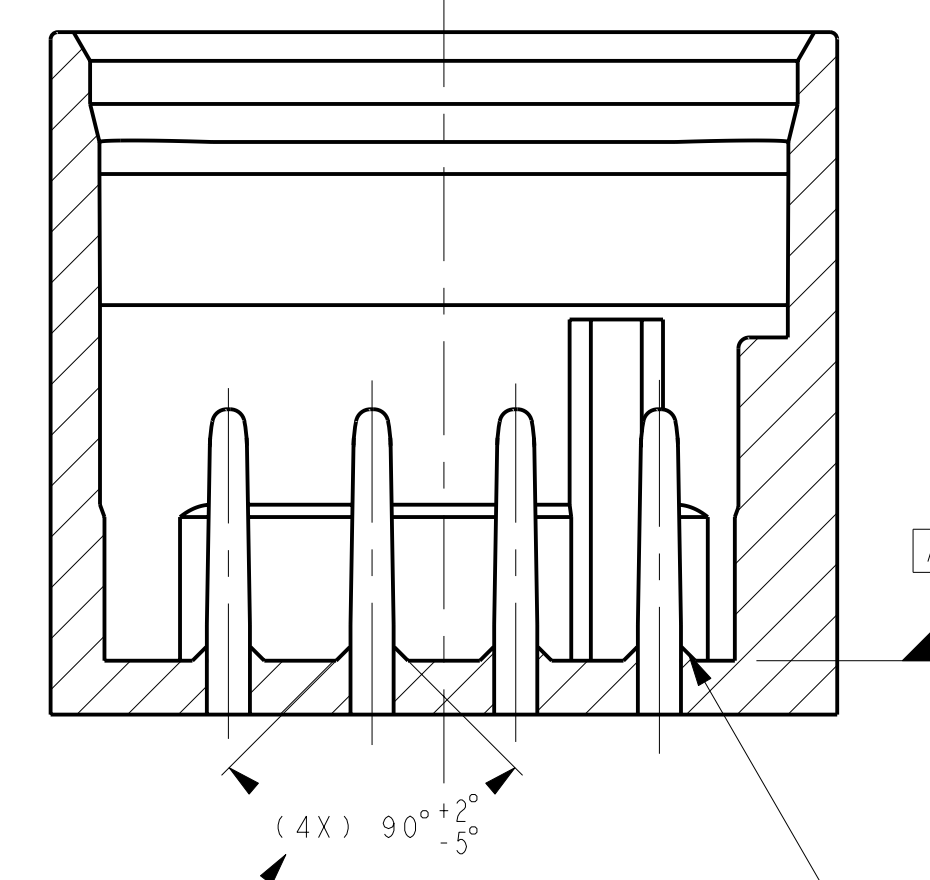
1. ALL DIMENSIONS SHOWN IN MILLIMETERS.
2. DIMENSIONING AND TOLERANCING PER ASME Y14.5M-1994
3. RADIUS ON ALL CORNERS SHOWN SHARP OR ALL UNSPECIFIED RADIUS: 0.25 EXCEPT AS NOTED.
4. A FULL SHROUD ON THE MATING CONNECTOR IS REQUIRED TO INSURE THAT THE CONNECTOR-HEADER POLARIZATION FEATURES (OPTIONS A THRU H) WILL FUNCTION. THE FULL SHROUD ALSO PREVENTS SCOOP DAMAGE TO THE HEADER PINS. REFER TO "SAE/USCAR-12 CONNECTOR DESIGN GUIDE LINES" FOR ADDITIONAL INFORMATION.
5. REFER TO USCAR/ENCAP PART LIST AS FOUND ON WEBSITE [HTTP://WWW.USCARTEAMS.ORG](http://www.uscarteams.org)
6. FOR BLADE BASE MATERIAL, PLATING AND PROCESS LUBRICANT SEE ENCAP DRW. NO. ENCAP-001
7. THIS PART HAS BEEN PREVIOUSLY DESIGNED AND TOOLED WITH THE DATUM REFERENCES AS SHOWN. THE DATUM REFERENCE USED ON THIS DRAWING TAKES PRECEDENCE OVER THE ENCAP DRAWING GUIDELINE DATUM REFERENCE REQUIREMENT.

NOTICE

THIS DRAWING, OR PORTIONS OF IT, ARE CONTROLLED BY THE ELECTRICAL WIRING COMPONENTS APPLICATION PARTNERSHIP (ENCAP), A SUBGROUP OF THE UNITED STATES CONSORTIUM FOR AUTOMOTIVE RESEARCH (USCAR). USCAR IS A PARTNERSHIP BETWEEN DAIMLERCHRYSLER CORPORATION, FORD MOTOR COMPANY, AND GENERAL MOTORS CORPORATION. ANY CHANGE TO A ENCAP CONTROLLED PORTION OF THIS DRAWING, INCLUDING A "RECORD CHANGE," MUST BE APPROVED, IN WRITING, BY THE RESPONSIBLE ENCAP MEMBER FROM EACH USCAR COMPANY. EACH ENCAP MEMBER AUTHORIZED TO SIGN FOR HIS OR HER COMPANY IS RESPONSIBLE FOR OBTAINING ALL NECESSARY APPROVALS WITHIN THAT COMPANY PRIOR TO SIGNING FOR APPROVAL OF THE CHANGE. ENCAP EXPRESSLY PROHIBITS ANY PARTY FROM CHANGING EITHER ANY ENCAP CONTROLLED PORTION OF THIS DRAWING OR ANY ASSOCIATED TOOLING BEFORE RECEIVING AN APPROVAL SIGNED BY AN AUTHORIZED REPRESENTATIVE FROM EACH ENCAP PARTNER. REFERENCE TO THE SIGNED APPROVAL FORM MUST BE ENTERED IN THIS DRAWING'S CONTROL COLUMN.

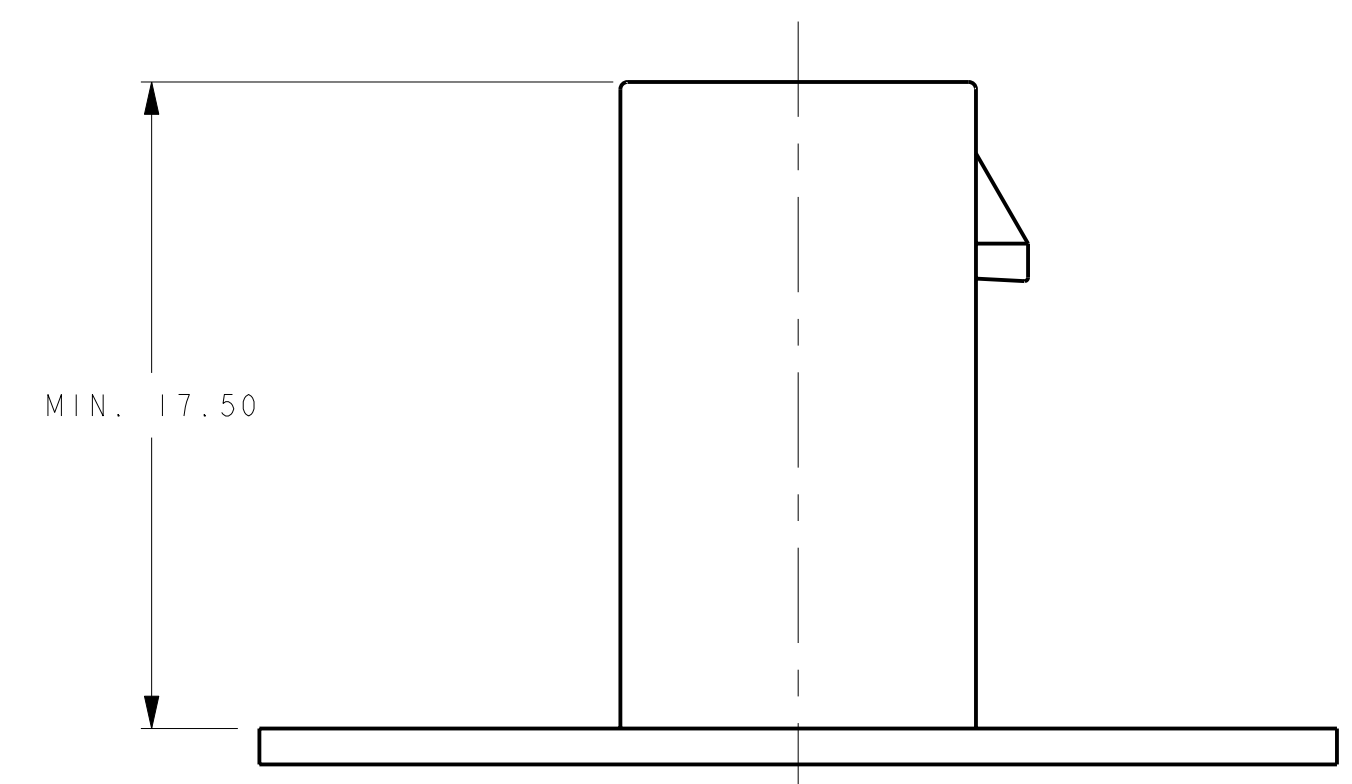


KEYING OPTION Z
THIS UNIVERSAL KEY OPTION IS NOT APPROVED BY USCAR/ENCAP FOR USE ON ORIGINAL EQUIPMENT DEVICES. HOWEVER, THIS KEY OPTION COULD BE ENCOUNTERED ON OLDER DEVICES.



SECTION B-B

PROVIDED FOR INFORMATIONAL PURPOSE ONLY



082	B	ADDED KEYING OPTIONS E,F,G & H AND ADDED NOTE FOR CONSTRUCTION BELOW DATUM A	05-18-10	SR	FAH
-	A	RELEASED	01-08-09	SR	FAH
CHANGE SERIAL NUMBER	LET	REVISION RECORD	DATE	DWN	CHK
TOLERANCES (UNLESS OTHERWISE SPECIFIED) DIMENSIONS ARE IN MILLIMETERS					
ANGLES ± 2°					
X.X ± 0.25 X.XX ± 0.10					
EWCAP					
SCALE	5:1	DRAWN BY	RANGARAJAN	CHECKED BY	FRANK HOLUB
TITLE	DIRECT CONNECT INTERFACE 4WAY (1X4) 1.2MM SEALED MALE				
SHEET	DRAWING NUMBER	SIZE	DO NOT SCALE DRAWING	REVISION LEVEL	
1	OF 1	120-S-004-1-202	COMPUTER AIDED DRAWING	B	



PC10609226

D

C

B

A

E SIZE SHEET